

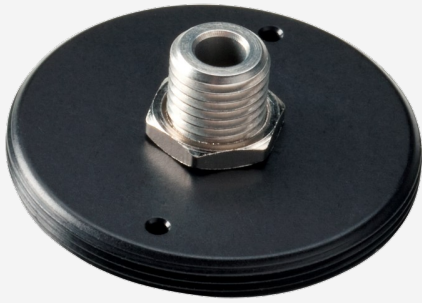
FOA-FULL-SMA

Fiber optic adaptor SMA with SM1 external thread. For: XLP12, UP10, IS12, UP25, PH, PE, UM, QE8, THZ9D, BEAMAGE-4M. Also for UP19 with SA-19 adaptor.

PRODUCT FAMILY KEY FEATURES

SM1-THREADED FIBER ADAPTOR

Plug your fiber optic connectors directly to your detector. Includes an SMA fiber connector.



SPECIFICATIONS

PHYSICAL CHARACTERISTICS

Weight

0.023 kg

ORDERING INFORMATION

FOA-FULL-SMA

202368

Specifications are subject to change without notice. Refer to the user manual for complete specifications.

INTERESTED IN THIS PRODUCT?

GET A QUOTE

Find your local sales representative at gentec-eo.com/contact-us