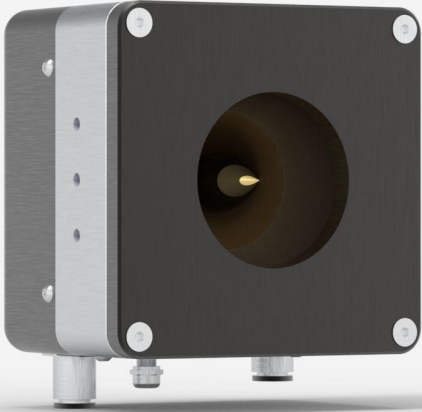


## HP60A-10KW-GD-IMP-D0

High power detector for laser power measurement up to 10000 W.



### PRODUCT FAMILY KEY FEATURES

#### SPECIAL MODEL FOR SMALL BEAMS

Perfect for small beams (with Avg Power Densities up to 10 kW/cm<sup>2</sup> @ 10 kW).

#### HIGH POWER HANDLING

Handles up to 30 kW of continuous power with our standard models. Custom models are available for higher powers (See [SUPER HP](#)).

#### STABLE READING

Less sensitive to variations in water cooling temperature than any other high-power water-cooled meter on the market

#### LARGE APERTURE

Our standard HP models (4KW, 12KW, 15KW and 30KW) have a very large effective aperture of up to 280 mm to accommodate even the largest laser beams. Larger apertures with various shapes are available upon request (See [SUPER HP](#)).

#### AVAILABLE WITH YAG AND CO<sub>2</sub> CALIBRATION

All HP Models can be calibrated at YAG and CO<sub>2</sub> wavelengths with a calibration uncertainty of +/- 5%

#### DIRECT USB CONNECTION TO A PC

Each head comes with both a DB-15 connector (for use with a Gentec-EO monitor) and a USB2.0 output for direct connection to a PC.

#### COMPATIBLE STAND

[STAND-S-443-C](#)

## SPECIFICATIONS

### MEASUREMENT CAPABILITIES

Maximum average power (continuous)	10000 W
Minimum average power <sup>1</sup>	300 W
Noise equivalent power <sup>2</sup>	10 W
Spectral range	0.8 - 12 μm
Typical rise time	12 s
Typical power sensitivity	0.2 mV/W
Power calibration uncertainty	±5 %
Repeatability	±2 %
Back reflections	~ 10 %
Linearity with power	±2 %
Linearity vs beam diameter	±2.0 %
Linearity vs beam position <sup>3</sup>	±3 %

1. For lower powers, call your Gentec-EO representative.

2. Nominal value. Actual value depends on electrical noise in the measurement system.

3. For a beam size of 20% of the aperture area, moved across 80% of the aperture area.

### WATER REQUIREMENTS

Required cooling flow <sup>1</sup>	(6 - 8) LPM < ±1 LPM/min
Temperature range	15 - 25 °C
Rate of temperature change	< ±3°C/min
Maximum water pressure	413 kPa (60 psi)

1. Contact Gentec-EO for clean deionized water cooling module option.

## DAMAGE THRESHOLDS

Maximum average power density<sup>1</sup>

80 kW/cm<sup>2</sup>

1. At 1064 nm, 1.07-1.08 µm and 10.6 µm, 500 W CW. Refer to user manual for damage threshold at other powers. May vary with wavelength and average power.

## CONTROLLER AND GUI SPECIFICATIONS

Data display

Real time, scope, needle, averaging, histogram and statistics

Analog output<sup>1</sup>

0-2 Volts

Serial commands via

USB

External power supply<sup>2</sup>

Through USB or Gentec-EO displays & PC interfaces

Display type

None

1. 12 V maximum output signal available upon request.

2. A USB power adaptor will be necessary if the HP is used with a DB-15 extension cable.

## PHYSICAL CHARACTERISTICS

Cooling

Water

Aperture diameter

60 mm

Absorber

GD

Dimensions

127H x 127W x 95D mm

Weight

5 kg

## ORDERING INFORMATION

HP60A-10KW-GD-IMP-D0

201305I

Specifications are subject to change without notice. Refer to the user manual for complete specifications.

# INTERESTED IN THIS PRODUCT?

GET A QUOTE

Find your local sales representative at [gentec-eo.com/contact-us](http://gentec-eo.com/contact-us)