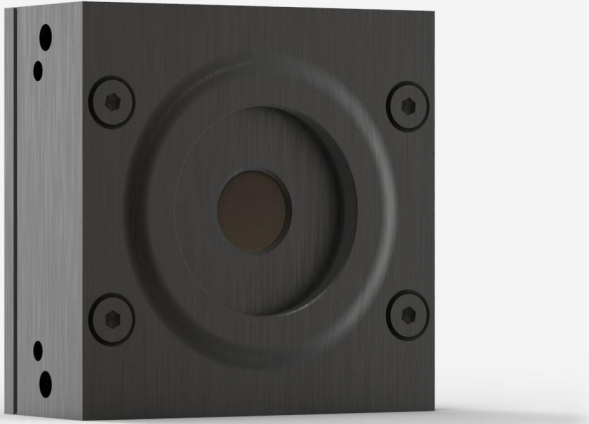


## UP10K-2S-H5-L-D0

Thermal detector for laser power measurement up to 2 W.



### PRODUCT FAMILY KEY FEATURES

#### LOW POWER THERMOPILE

Noise level of a photo detector with the large bandwidth and high power capacity of a thermal device

#### IR FILTER (UPF10 MODELS)

Removes unwanted IR interference

#### HIGH PERFORMANCE

- Fast rise time (1.1 sec)
- High damage threshold (36 kW/cm<sup>2</sup>)

#### COMPACT DESIGN

Only 13 mm thick (UP10P model)

#### ENERGY MODE

Measure single shot energy up to 3 J

#### SMART INTERFACE

Containing all the calibration data

#### COMPATIBLE STAND

[STAND-S-233](#)

## SPECIFICATIONS

### MEASUREMENT CAPABILITIES

Maximum average power (continuous)	2 W
Noise equivalent power <sup>1</sup>	30 $\mu$ W
Spectral range <sup>2</sup>	0.193 - 20 $\mu$ m
Typical rise time <sup>3</sup>	1.1 s
Power calibration uncertainty <sup>4</sup>	$\pm$ 2.5 %
Repeatability	$\pm$ 0.5 %

1. Nominal value, actual value depends on electrical noise in the measurement system.
2. For the calibrated spectral range, see the user manual.
3. With anticipation.
4. Including linearity with power.

### MEASUREMENT CAPABILITIES (ENERGY MODE)

Maximum measurable energy <sup>1</sup>	3 J
Noise equivalent energy <sup>2</sup>	5 mJ
Minimum repetition period	2 s
Maximum pulse width	63 ms
Energy calibration uncertainty <sup>3</sup>	$\pm$ 5 %

1. For 360  $\mu$ s pulses. Higher pulse energy possible for long pulses (ms), less for short pulses (ns).
2. Nominal value, actual value depends on electrical noise in the measurement system.
3. When single-shot energy calibration is purchased

### DAMAGE THRESHOLDS

Maximum average power density <sup>1</sup>	36 kW/cm <sup>2</sup>
Maximum energy density <sup>2</sup>	1 J/cm <sup>2</sup>

1. At 1064 nm, 10 W CW. May vary with wavelength and average power.
2. At 1064 nm, 7 ns, 10 Hz. Damage thresholds vary with pulse width. Use our Product Finder or contact Gentec-EO to know about damage thresholds for different pulse widths.

### PHYSICAL CHARACTERISTICS

Cooling	Convection
---------	------------

Aperture diameter	10 mm
Absorber	H5
Dimensions	50H x 50W x 21.5D mm
Weight	0.193 kg

#### ORDERING INFORMATION

UP10K-2S-H5-L-D0	202872
UP10K-2S-H5-L-IDR-D0	203317
UP10K-2S-H5-L-INT-D0	203035

Specifications are subject to change without notice. Refer to the user manual for complete specifications.

## INTERESTED IN THIS PRODUCT?

GET A QUOTE

Find your local sales representative at [gentec-eo.com/contact-us](https://gentec-eo.com/contact-us)