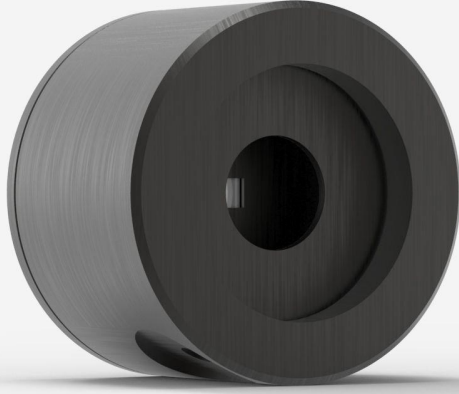


## PE3B-SI-D0

Photodiode detector for laser energy measurement up to 24 pJ.



### PRODUCT FAMILY KEY FEATURES

#### VERY LOW NOISE LEVEL

Take measurements with a noise level as low as 8 fJ (model PE3B-Si only) with the M-LINK, MAESTRO and S-LINK monitors.

#### 3 SENSORS AVAILABLE

- PE-B-SI family: 3 and 10 mm  $\varnothing$  silicon sensors for 0.21 to 1.08  $\mu\text{m}$
- PE5B-GE: 5 mm  $\varnothing$ , germanium sensor for 0.8 to 1.65  $\mu\text{m}$
- PE3B-IN: 3 mm  $\varnothing$ , InGaAs sensor for 0.9 to 1.7  $\mu\text{m}$

#### SMART INTERFACE

Containing all the calibration data

#### COMPATIBLE STAND

[STAND-D-233](#)

## SPECIFICATIONS

### MEASUREMENT CAPABILITIES

Spectral range <sup>1</sup>	210 - 1080 nm
Typical rise time	15 $\mu\text{s}$
Maximum repetition frequency	1000 Hz
Maximum measurable energy <sup>2</sup>	24 pJ
Noise equivalent energy <sup>3</sup>	8 fJ
Maximum pulse width	10 $\mu\text{s}$
Energy calibration uncertainty	$\pm 4\%$ (634 nm)

1. This detector is NIST-traceable at the calibration wavelength of 634 nm. Typical values are used at other wavelengths.

2. At 634 nm. See curves for maximum power at other wavelengths.

3. Nominal value. Actual value depends on environmental electromagnetic interference and wavelength.

### DAMAGE THRESHOLDS

Maximum power	66 nW
---------------	-------

### PHYSICAL CHARACTERISTICS

Aperture diameter	3 mm
Absorber	SiUV
Dimensions	38.1 $\varnothing$ x 27.4D mm
Weight	0.09 kg
Distance to sensor face	13.7 mm

### ORDERING INFORMATION

PE3B-SI-D0
PE3B-SI-INE-D0
PE3B-SI-INT-D0
PE3B-SI-IDR-D0

## INTERESTED IN THIS PRODUCT?

GET A QUOTE

Find your local sales representative at [gentec-eo.com/contact-us](https://gentec-eo.com/contact-us)