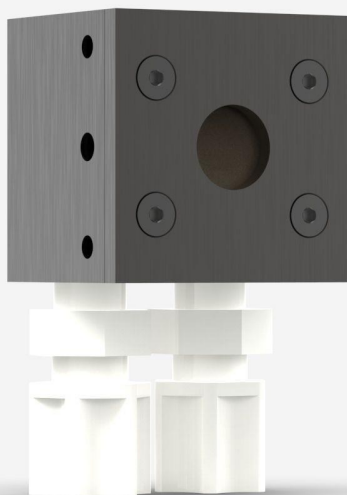


## UP12E-70W-H5-DO

Thermal detector for laser power measurement up to 70 W.



### KEY FEATURES

#### MODULAR CONCEPT

Increase the power capability of your detector: 3 different cooling modules

#### HIGH PERFORMANCE

- Fast rise time (0.3 sec)
- High damage threshold (36 kW/cm<sup>2</sup>)

#### COMPACT DESIGN

Only 14 mm thick (10S model)

#### ENERGY MODE

Measure single shot energy up to 5 J

#### SMART INTERFACE

Containing all the calibration data

#### COMPATIBLE STAND

[STAND-S-233](#)

## SPECIFICATIONS

### MEASUREMENT CAPABILITIES

Maximum average power (continuous) <sup>1</sup>	70 W
Maximum average power (1 minute) <sup>2</sup>	110 W
Noise equivalent power <sup>3</sup>	1 mW
Spectral range <sup>4</sup>	0.193 - 20 μm
Typical rise time <sup>5</sup>	0.3 sec
Typical power sensitivity <sup>6</sup>	0.53 mV/W
Power calibration uncertainty <sup>7</sup>	±2.5 %
Repeatability	±0.5 %

1. Minimum cooling flow 0.5 liters/min, water temperature ≤ 22°C, 1/8 NPT compression fittings for 1/4 inch semi-rigid tube. Contact Gentec-EO for clean deionized water cooling module option.

2. Minimum cooling flow 0.5 liters/min, water temperature ≤ 22°C, 1/8 NPT compression fittings for 1/4 inch semi-rigid tube. Contact Gentec-EO for clean deionized water cooling module option.

3. Nominal value, actual value depends on electrical noise in the measurement system.

4. For the calibrated spectral range, see the user manual.

5. With anticipation.

6. Into 100 kΩ load. Maximum output voltage = sensitivity x maximum power.

7. Including linearity with power.

### MEASUREMENT CAPABILITIES (ENERGY MODE)

Typical energy sensitivity	0.84 mV/J
Maximum measurable energy <sup>1</sup>	5 J
Noise equivalent energy <sup>2</sup>	0.02 J
Minimum repetition period	1.5 s
Maximum pulse width	50 ms
Energy calibration uncertainty <sup>3</sup>	±5 %

1. For 360 μs pulses. Higher pulse energy possible for long pulses (ms), less for short pulses (ns).

2. Nominal value, actual value depends on electrical noise in the measurement system.

3. When single-shot energy calibration is purchased

### DAMAGE THRESHOLDS

Maximum average power density <sup>1</sup>	36 kW/cm <sup>2</sup>
--	-----------------------

Maximum energy density<sup>2</sup>

1 J/cm<sup>2</sup>

1. At 1064 nm, 10 W CW.
2. At 1064 nm, 7 ns, 10 Hz.

## PHYSICAL CHARACTERISTICS

Aperture diameter	12 mm
Absorber	H5
Dimensions	68.5H x 38W x 34D mm
Weight	0.193 kg

## ORDERING INFORMATION

UP12E-70W-H5-D0	200389
UP12E-70W-H5-IDR-D0	203325
UP12E-70W-H5-INT-D0	203037

## INTERESTED IN THIS PRODUCT?

GET A QUOTE

Find your local sales representative at [gentec-eo.com/contact-us](http://gentec-eo.com/contact-us)