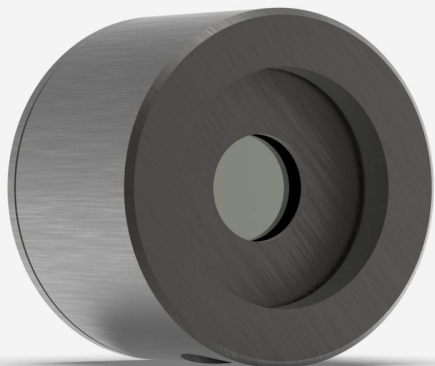


PH100-SIUV-DO

Photodiode detector for laser power measurement up to 4 mW.



KEY FEATURES

LARGE APERTURES

10 mm Ø for the silicon sensors

3 VERSIONS

- Silicon 350 - 1080 nm, up to 750 mW
- Silicon-UV 210 - 1080 nm, up to 38 mW
- Germanium 800 - 1650 nm, up to 500 mW

CHOICE OF ATTENUATORS

- OD0.3: 50% transmission (for PH100-SI^{UV} only)
- OD1: 10% transmission
- OD2: 1% transmission

HIGH ACCURACY

The new PH100-SI-HA presents the lowest calibration uncertainty to date.

PRECISE CALIBRATION

Wavelength selection in 1 nm steps

SMART INTERFACE

Containing all the calibration data

COMPATIBLE STAND

[STAND-D-233](#)



SPECIFICATIONS

MEASUREMENT CAPABILITIES

Maximum average power ¹	4 mW
Noise equivalent power ²	10 pW
Spectral range	210 - 1080 nm
Typical rise time	0.2 sec
Power calibration uncertainty	±18 % (210 - 229 nm) ±8.0 % (230 - 254 nm) ±6.5 % (255 - 399 nm) ±2.5 % (400 - 899 nm) ±4.0 % (900 - 1009 nm) ±7.5 % (1010 - 1080 nm)
Peak sensitivity	0.45 A/W @ 850 nm

1. At 532 nm. See curves for maximum power at other wavelengths.

2. At 850 nm. Nominal value. Actual value depends on environmental electromagnetic interference and wavelength.

DAMAGE THRESHOLDS

Maximum average power density	100 W/cm ²
-------------------------------	-----------------------

PHYSICAL CHARACTERISTICS

Aperture diameter	10 mm
Absorber	SiUV
Dimensions	38.1Ø x 27.4D mm
Weight	0.13 kg
Distance to sensor face	13.7 mm

ORDERING INFORMATION

PH100-SIUV-DO

200879

INTERESTED IN THIS PRODUCT?

GET A QUOTE

Find your local sales representative at gentec-eo.com/contact-us