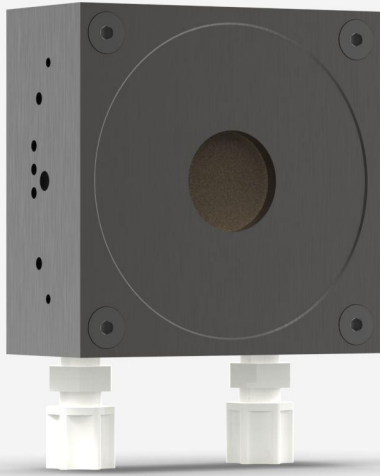


UP25M-350W-H12-D0

Thermal detector for laser power measurement up to 350 W.



PRODUCT FAMILY KEY FEATURES

NEW: IMPROVED DESIGN

It is now even simpler to install a UP25 detector into your optical system. All UP25 detectors now include an SM1-threaded aperture (1.035"-40 thread).

MODULAR CONCEPT

Increase the power capability of your detector: 4 different cooling modules

HIGH PERFORMANCE

- Fast rise time (1.3 sec)
- High damage threshold (45 kW/cm²)

ENERGY MODE

Measure single shot energy up to 40 J

SMART INTERFACE

Containing all the calibration data

COMPATIBLE STAND

[STAND-S-443](#)

SPECIFICATIONS

MEASUREMENT CAPABILITIES

Maximum average power (continuous) ¹	350 W
Maximum average power (1 minute) ²	350 W
Noise equivalent power ³	10 mW
Spectral range ⁴	0.193 - 20 μm
Typical rise time ⁵	1.3 s
Power calibration uncertainty ⁶	±2.5 %
Repeatability	±0.5 %

1. Minimum cooling flow 1.5 liters/min, water temperature ≤ 22°C, 1/8 NPT compression fittings for 1/4 inch semi-rigid tube. Contact Gentec-EO for clean deionized water cooling module option.

2. Minimum cooling flow 1.5 liters/min, water temperature ≤ 22°C, 1/8 NPT compression fittings for 1/4 inch semi-rigid tube. Contact Gentec-EO for clean deionized water cooling module option.

3. Nominal value, actual value depends on electrical noise in the measurement system.

4. For the calibrated spectral range, see the user manual.

5. With anticipation.

6. Including linearity with power.

MEASUREMENT CAPABILITIES (ENERGY MODE)

Maximum measurable energy ¹	40 J
Noise equivalent energy ²	0.2 J
Minimum repetition period	11.5 s
Maximum pulse width	390 ms
Energy calibration uncertainty ³	±5 %

1. For 360 μs pulses. Higher pulse energy possible for long pulses (ms), less for short pulses (ns).

2. Nominal value, actual value depends on electrical noise in the measurement system.

3. When single-shot energy calibration is purchased

DAMAGE THRESHOLDS

Maximum average power density ¹	45 kW/cm ²
Maximum energy density ²	1 J/cm ²

1. At 1064 nm, 10 W CW. May vary with wavelength and average power.

2. At 1064 nm, 7 ns, 10 Hz. May vary with wavelength and pulse width.

PHYSICAL CHARACTERISTICS

Cooling	Water
Aperture diameter	25 mm
Absorber	H12
Dimensions	119H x 89W x 43D mm
Weight	0.87 kg

ORDERING INFORMATION

UP25M-350W-H12-D0	201893
UP25M-350W-H12-IDR-D0	203359
UP25M-350W-H12-BLU-D0	203664
UP25M-350W-H12-INT-D0	203051

Specifications are subject to change without notice. Refer to the user manual for complete specifications.

INTERESTED IN THIS PRODUCT?

GET A QUOTE

Find your local sales representative at gentec-eo.com/contact-us