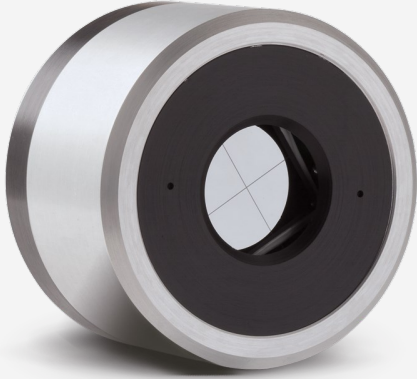


## QUAD-20-MT-E

4-quadrant laser position sensing detector for pulsed lasers.



### PRODUCT FAMILY KEY FEATURES

#### MEASURE, TRACK AND ALIGN

Follow your laser beam wherever it goes.

#### 4-CHANNEL DETECTORS

Unique quadrant detector technology senses laser beam position with high resolution.

#### FOR CW, PULSED AND HIGH REP RATE LASERS

- QUAD-E: energy per pulse from  $\mu\text{J}$  to  $\text{mJ}$
- QUAD-P: powers from  $\mu\text{W}$  to  $\text{mW}$

#### FROM UV TO FIR AND THZ

Absorbers to cover all sources, from UV to millimeter wavelengths

#### LARGE AREA SENSORS

9 mm and 20 mm square detectors

#### FAST USB 2.0 CONNECTION

Ensures full speed tracking

#### INCLUDES APPLICATION SOFTWARE

Complete LabView application software included, with many features

#### COMPATIBLE STAND

[STAND-D-233](#)

## SPECIFICATIONS

### MEASUREMENT CAPABILITIES

|                                |                          |
|--------------------------------|--------------------------|
| Spectral range                 | 0.1 - 3000 $\mu\text{m}$ |
| Typical rise time              | 150 $\mu\text{s}$        |
| Typical power sensitivity      | 2000 $\text{V/W}$        |
| Maximum repetition rate        | 1000 $\text{Hz}$         |
| Minimum beam size <sup>1</sup> | 10 mm $\varnothing$      |
| Minimum position resolution    | 1 $\mu\text{m}$          |
| Maximum measurable energy      | 20 $\text{mJ}$           |
| Noise equivalent energy        | 1 $\mu\text{J}$          |
| Maximum pulse width            | 2.5 $\mu\text{s}$        |

1. For optimal performance

### DAMAGE THRESHOLDS

|  |                     |
|--|---------------------|
| Maximum average power density <sup>1</sup> | 0.1 $\text{W/cm}^2$ |
| Maximum energy density <sup>2</sup>        | 50 $\text{mJ/cm}^2$ |

1. At 1064 nm.

2. At 1064 nm, 10 ns.

### PHYSICAL CHARACTERISTICS

|                 |                               |
|-----------------|-------------------------------|
| Aperture width  | 20 mm                         |
| Aperture height | 20 mm                         |
| Absorber        | MT                            |
| Dimensions      | 63.5 $\varnothing$ X 40.6D mm |
| Weight          | 0.18 kg                       |

Specifications are subject to change without notice. Refer to the user manual for complete specifications.

## INTERESTED IN THIS PRODUCT?

GET A QUOTE

Find your local sales representative at [gentec-eo.com/contact-us](http://gentec-eo.com/contact-us)