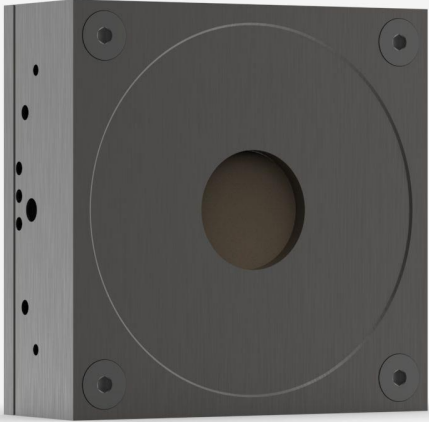


UP25N-40S-H9-D0

Thermal detector for laser power measurement up to 40 W.



PRODUCT FAMILY KEY FEATURES

NEW: IMPROVED DESIGN

It is now even simpler to install a UP25 detector into your optical system. All UP25 detectors now include an SM1-threaded aperture (1.035"-40 thread).

MODULAR CONCEPT

Increase the power capability of your detector: 4 different cooling modules

HIGH PERFORMANCE

- Fast rise time (1.3 sec)
- High damage threshold (45 kW/cm²)

ENERGY MODE

Measure single shot energy up to 40 J

SMART INTERFACE

Containing all the calibration data

COMPATIBLE STAND

[STAND-S-443](#)

SPECIFICATIONS

MEASUREMENT CAPABILITIES

Maximum average power (continuous)	40 W
Maximum average power (1 minute)	80 W
Noise equivalent power ¹	3 mW
Spectral range ²	0.193 - 20 μm
Typical rise time ³	1.3 s
Power calibration uncertainty ⁴	±2.5 %
Repeatability	±0.5 %

1. Nominal value, actual value depends on electrical noise in the measurement system.

2. For the calibrated spectral range, see the user manual.

3. With anticipation.

4. Including linearity with power.

MEASUREMENT CAPABILITIES (ENERGY MODE)

Maximum measurable energy ¹	40 J
Noise equivalent energy ²	0.2 J
Minimum repetition period	4.6 s
Maximum pulse width	123 ms
Energy calibration uncertainty ³	±5 %

1. For 360 μs pulses. Higher pulse energy possible for long pulses (ms), less for short pulses (ns).

2. Nominal value, actual value depends on electrical noise in the measurement system.

3. When single-shot energy calibration is purchased

DAMAGE THRESHOLDS

Maximum average power density ¹	45 kW/cm ²
Maximum energy density ²	1 J/cm ²

1. At 1064 nm, 10 W CW. May vary with wavelength and average power.

2. At 1064 nm, 7 ns, 10 Hz. May vary with wavelength and pulse width.

PHYSICAL CHARACTERISTICS

Cooling	Convection
---------	------------

Aperture diameter	25 mm
Absorber	H9
Dimensions	89H x 89W x 35D mm
Weight	0.68 kg

ORDERING INFORMATION

UP25N-40S-H9-D0	200195
UP25N-40S-H9-BLU-D0	203673
UP25N-40S-H9-IDR-D0	203365
UP25N-40S-H9-INT-D0	203057

Specifications are subject to change without notice. Refer to the user manual for complete specifications.

INTERESTED IN THIS PRODUCT?

GET A QUOTE

Find your local sales representative at gentec-eo.com/contact-us