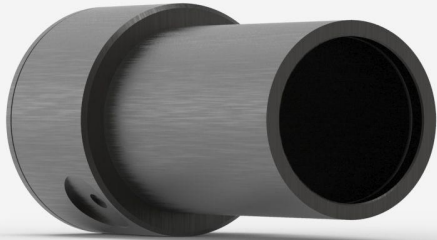


UM9B-BL-D0

Pyroelectric detector for laser power measurement up to 25 mW.



PRODUCT FAMILY KEY FEATURES

VERY LOW NOISE LEVEL

Noise levels of a photodetector, but with the large bandwidth of a pyroelectric

VERY LARGE BANDWIDTH

From DUV to FIR thanks to pyroelectric technology

SMART INTERFACE

Containing all the calibration data

COMPATIBLE STAND

[STAND-D-233](#)

SPECIFICATIONS

MEASUREMENT CAPABILITIES

Maximum average power (continuous) ¹	25 mW
Noise equivalent power	300 nW
Spectral range ²	0.1 - 20 μ m
Typical rise time	0.2 s
Power calibration uncertainty ³	± 4 %
Chopper frequency ⁴	10 \pm 1 Hz

1. 20 mW with MAESTRO, 25 mW with M-LINK.
2. For the calibrated spectral range, see the user manual.
3. At 1064 nm.
4. SDC-500 digital optical chopper sold separately

DAMAGE THRESHOLDS

Maximum average power density	50 mW/cm ²
-------------------------------	-----------------------

PHYSICAL CHARACTERISTICS

Aperture diameter	9 mm
Absorber	BL
Dimensions	38.1 \varnothing X 79D mm
Weight	0.09 kg

ORDERING INFORMATION

UM9B-BL-D0	202024
------------	--------

Specifications are subject to change without notice. Refer to the user manual for complete specifications.

INTERESTED IN THIS PRODUCT?

GET A QUOTE

Find your local sales representative at gentec-eo.com/contact-us