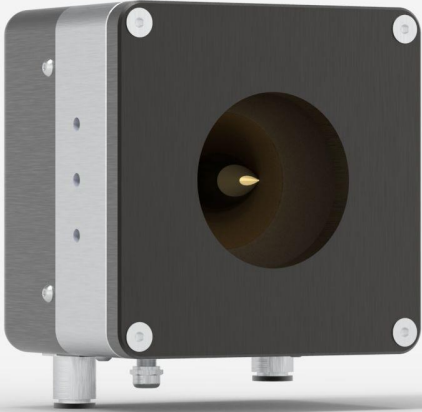


HP60A-10KW-GD-IMP-D0

High power detector for laser power measurement up to 10000 W.



PRODUCT FAMILY KEY FEATURES

SPECIAL MODEL FOR SMALL BEAMS

Perfect for small beams (with Avg Power Densities up to 10 kW/cm² @ 10 kW).

HIGH POWER HANDLING

Handles up to 30 kW of continuous power with our standard models. Custom models are available for higher powers ([See SUPER HP](#)).

STABLE READING

Less sensitive to variations in water cooling temperature than any other high-power water-cooled meter on the market

LARGE APERTURE

Our standard HP models (4KW, 12KW, 15KW and 30KW) have a very large effective aperture of up to 280 mm to accommodate even the largest laser beams. Larger apertures with various shapes are available upon request ([See SUPER HP](#)).

AVAILABLE WITH YAG AND CO₂ CALIBRATION

All HP Models can be calibrated at YAG and CO₂ wavelengths with a calibration uncertainty of +/- 5%

DIRECT USB CONNECTION TO A PC

Each head comes with both a DB-15 connector (for use with a Gentec-EO monitor) and a USB2.0 output for direct connection to a PC.

COMPATIBLE STAND

[STAND-S-443-C](#)

SPECIFICATIONS

MEASUREMENT CAPABILITIES

| | |
|---|-------------|
| Maximum average power (continuous) | 10000 W |
| Minimum average power ¹ | 300 W |
| Noise equivalent power ² | 10 W |
| Spectral range | 0.8 - 12 μm |
| Typical rise time | 12 s |
| Typical power sensitivity | 0.2 mV/W |
| Power calibration uncertainty | ±5 % |
| Repeatability | ±2 % |
| Back reflections | ~ 10 % |
| Linearity with power | ±2 % |
| Linearity vs beam diameter | ±2.0 % |
| Linearity vs beam position ³ | ±3 % |

1. For lower powers, call your Gentec-EO representative.

2. Nominal value. Actual value depends on electrical noise in the measurement system.

3. For a beam size of 20% of the aperture area, moved across 80% of the aperture area.

WATER REQUIREMENTS

| | |
|------------------------------------|--------------------------|
| Required cooling flow ¹ | (6 - 8) LPM < ±1 LPM/min |
| Temperature range | 15 - 25 °C |
| Rate of temperature change | < ±3°C/min |
| Maximum water pressure | 413 kPa (60 psi) |

1. Contact Gentec-EO for clean deionized water cooling module option.

DAMAGE THRESHOLDS

Maximum average power density¹

80 kW/cm²

1. At 1064 nm, 1.07-1.08 μm and 10.6 μm, 500 W CW. Refer to user manual for damage threshold at other powers. May vary with wavelength and average power.

CONTROLLER AND GUI SPECIFICATIONS

Data display

Real time, scope, needle, averaging, histogram and statistics

Analog output¹

0-2 Volts

Serial commands via

USB

External power supply²

Through USB or Gentec-EO displays & PC interfaces

Display type

None

1. 12 V maximum output signal available upon request.

2. A USB power adaptor will be necessary if the HP is used with a DB-15 extension cable.

PHYSICAL CHARACTERISTICS

Cooling

Water

Aperture diameter

60 mm

Absorber

GD

Dimensions

127H x 127W x 95D mm

Weight

5 kg

ORDERING INFORMATION

HP60A-10KW-GD-IMP-D0

201305I

HP60A-10KW-GD-IMP-BLU-D0

TBD

Specifications are subject to change without notice. Refer to the user manual for complete specifications.

INTERESTED IN THIS PRODUCT?

GET A QUOTE

Find your local sales representative at gentec-eo.com/contact-us