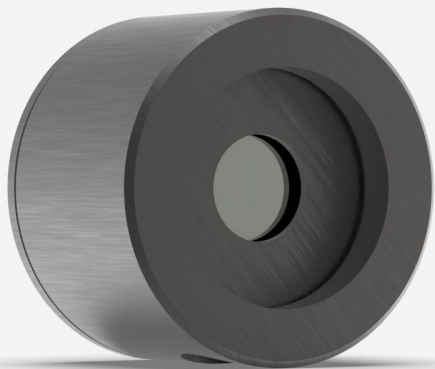


PE10B-SI-D0

Photodiode detector for laser energy measurement up to 81 nJ.



KEY FEATURES

VERY LOW NOISE LEVEL

Take measurements with a noise level as low as 8 fJ with the M-LINK, MAESTRO and S-LINK monitors.

3 SENSORS AVAILABLE

- PE-B-SI family: 3 and 10 mm Ø silicon sensors for 0.21 to 1.08 µm
- PE5B-GE: 5 mm Ø, germanium sensor for 0.8 to 1.65 µm
- PE3B-IN: 3 mm Ø, InGaAs sensor for 0.9 to 1.7 µm

SMART INTERFACE

Containing all the calibration data

COMPATIBLE STAND

[STAND-D-233](#)

SPECIFICATIONS

MEASUREMENT CAPABILITIES

Spectral range ¹	210 - 1080 nm
Typical rise time	30 µs
Maximum repetition frequency	1000 Hz
Typical energy sensitivity	20 mV/J
Maximum measurable energy ²	81 nJ
Noise equivalent energy ³	1.5 pJ
Maximum pulse width	10 µs
Energy calibration uncertainty	±18 % (210 - 229 nm) ±8.0 % (230 - 254 nm) ±6.5 % (255 - 399 nm) ±2.5 % (400 - 899 nm) ±4.0 % (900 - 1009 nm) ±7.5 % (1010 - 1080 nm)

1. This detector is NIST-traceable at the calibration wavelength of 634 nm. Typical values are used at other wavelengths.

2. At 634 nm. See curves for maximum power at other wavelengths.

3. Nominal value. Actual value depends on environmental electromagnetic interference and wavelength.

DAMAGE THRESHOLDS

Maximum average power density	65 MW/cm ²
Maximum energy density	5 µJ/cm ²
Maximum power	230 µW

PHYSICAL CHARACTERISTICS

Aperture diameter	10 mm
Absorber	SiUV
Dimensions	38.1Ø x 27.4D mm
Weight	0.09 kg
Distance to sensor face	13.7 mm

ORDERING INFORMATIONS

PE10B-SI-D0	202019
PE10B-SI-IDR-D0	
PE10B-SI-INE-D0	

INTERESTED IN THIS PRODUCT?

GET A QUOTE

Find your local sales representative at gentec-eo.com/contact-us