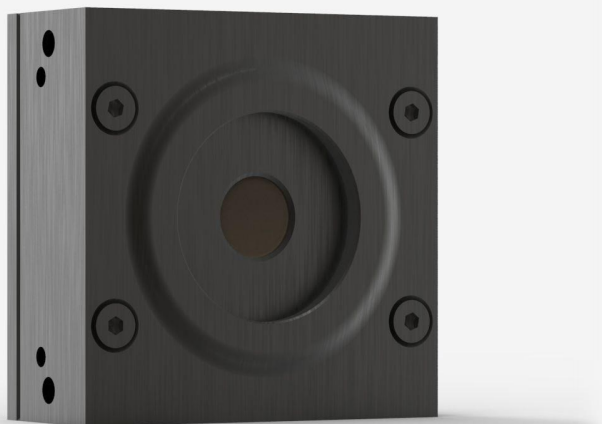


UP10K-2S-H5-L-D0

Thermal detector for laser power measurement up to 2 W.



KEY FEATURES

LOW POWER THERMOPILE

Noise level of a photo detector with the large bandwidth and high power capacity of a thermal device

IR FILTER (UPF10 MODELS)

Removes unwanted IR interference

HIGH PERFORMANCE

- Fast rise time (1.1 sec)
- High damage threshold (36 kW/cm²)

COMPACT DESIGN

Only 13 mm thick (UP10P model)

ENERGY MODE

Measure single shot energy up to 3 J

SMART INTERFACE

Containing all the calibration data

COMPATIBLE STAND

[STAND-S-233](#)

SPECIFICATIONS

MEASUREMENT CAPABILITIES

Maximum average power (continuous)	2 W
Noise equivalent power ¹	30 μW
Spectral range ²	0.193 - 20 μm
Typical rise time ³	1.1 s
Typical power sensitivity ⁴	2 mV/W
Power calibration uncertainty ⁵	±2.5 %
Repeatability	±0.5 %

1. Nominal value, actual value depends on electrical noise in the measurement system.
2. For the calibrated spectral range, see the user manual.
3. With anticipation.
4. Into 100 kΩ load. Maximum output voltage = sensitivity x maximum power.
5. Including linearity with power.

MEASUREMENT CAPABILITIES (ENERGY MODE)

Typical energy sensitivity	2.4 mV/J
Maximum measurable energy ¹	3 J
Noise equivalent energy ²	5 mJ
Minimum repetition period	2 s
Maximum pulse width	63 ms
Energy calibration uncertainty ³	±5 %

1. For 360 μs pulses. Higher pulse energy possible for long pulses (ms), less for short pulses (ns).
2. Nominal value, actual value depends on electrical noise in the measurement system.
3. When single-shot energy calibration is purchased

DAMAGE THRESHOLDS

Maximum average power density ¹	36 kW/cm ²
Maximum energy density ²	1 J/cm ²

1. At 1064 nm, 10 W CW. May vary with wavelength and average power.

2. At 1064 nm, 7 ns, 10 Hz. May vary with wavelength and pulse width.

PHYSICAL CHARACTERISTICS

Cooling	Convection
Aperture diameter	10 mm
Absorber	H5
Dimensions	50H x 50W x 21.5D mm
Weight	0.193 kg

ORDERING INFORMATION

UP10K-2S-H5-L-D0	202872
UP10K-2S-H5-L-IDR-D0	203317
UP10K-2S-H5-L-INT-D0	203035

Specifications are subject to change without notice. Refer to the user manual for complete specifications.

INTERESTED IN THIS PRODUCT?

GET A QUOTE

Find your local sales representative at gentec-eo.com/contact-us