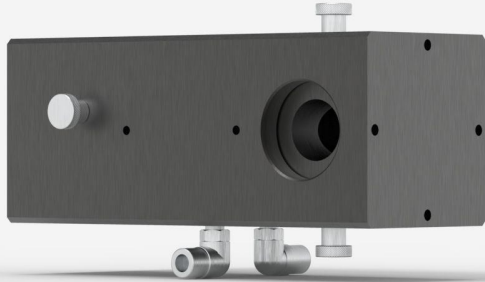


## BA32-1KW

Optical attenuator, 32 mm Ø, up to 1000 W.



### PRODUCT FAMILY KEY FEATURES

#### NEW: IMPROVED DESIGN

It is now even simpler to install a BA beam sampler into your optical system. The input and output sides on all BA16 models now include an SM1-threaded aperture and four M4-threaded holes compatible with 30-mm cage systems.

#### MANAGE THE LASER POWER

CMOS sensors have low saturation levels as well as low damage thresholds. It is thus very important that you control your laser power to get the best measurement possible and avoid damaging the BEAMAGE camera.

#### SAMPLE YOUR LASER BEAM

The BA series optical attenuators use Fresnel reflection on two orthogonal wedges to pick off a small fraction of the input beam. The incoming beam polarization state and irradiance are preserved.

#### MANY POSSIBLE USES

- Monitor power and beam profile simultaneously
- Polarization insensitive beam-splitter with no back-reflections
- Optical pick-off for use with our energy or power detectors
- Attenuator for our high sensitivity detectors like M6 series and PH series

#### COMPATIBLE STAND

[STAND-S-443-C-M](#)

## SPECIFICATIONS

### MEASUREMENT CAPABILITIES

Spectral range	200 - 2100 nm
Equivalent attenuation	1/1900 @ 1064 nm
Integrated power detector	Compatible with UP55 series (not included)
Optical wedges material	UV Fused Silica (uncoated)
Residual beam deviation	3.6° @ 1064 nm
Polarization correction	Yes (pair of orthogonal wedges)

### DAMAGE THRESHOLDS

Maximum average power density	10 MW/cm <sup>2</sup>
Maximum energy density	10 J/cm <sup>2</sup>
Maximum power	1000 W

### PHYSICAL CHARACTERISTICS

Cooling	Water
Aperture diameter	32 mm
Dimensions	145H x 250W x 132D mm
Weight	5.5 kg
Mounting thread	SM2

### ORDERING INFORMATION

BA32-1KW	205319
----------	--------

Specifications are subject to change without notice. Refer to the user manual for complete specifications.

**INTERESTED IN THIS PRODUCT?**

GET A QUOTE

Find your local sales representative at [gentec-eo.com/contact-us](https://gentec-eo.com/contact-us)