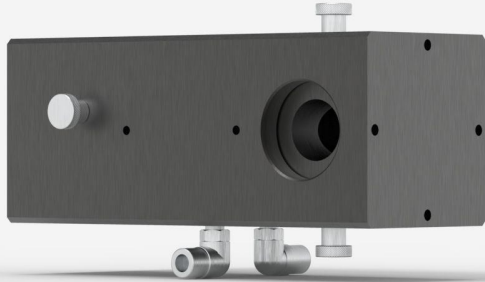


## BA32-1KW

Optical attenuator, 32 mm Ø, up to 1000 W.



### 제품군 주요 특징

#### NEW: IMPROVED DESIGN

It is now even simpler to install a BA beam sampler into your optical system. The input and output sides on all BA16 models now include an SM1-threaded aperture and four M4-threaded holes compatible with 30-mm cage systems.

#### MANAGE THE LASER POWER

CMOS sensors have low saturation levels as well as low damage thresholds. It is thus very important that you control your laser power to get the best measurement possible and avoid damaging the BEAMAGE camera.

#### SAMPLE YOUR LASER BEAM

The BA series optical attenuators use Fresnel reflection on two orthogonal wedges to pick off a small fraction of the input beam. The incoming beam polarization state and irradiance are preserved.

#### MANY POSSIBLE USES

- Monitor power and beam profile simultaneously
- Polarization insensitive beam-splitter with no back-reflections
- Optical pick-off for use with our energy or power detectors
- Attenuator for our high sensitivity detectors like M6 series and PH series

#### 호환 스탠드

[STAND-S-443-C-M](#)

## 사양

계측 성능	
스펙트럼 범위	200 - 2100 nm
등가 감쇠	1/1900 @ 1064 nm
내장 파워 검출기	Compatible with UP55 series (not included)
광학 웨지 소재	UV 용융 실리콘(비 코팅)
잔여 빔 편차	3.6° @ 1064 nm
편광 보정	있음(직각 웨지 쌍)
손상 한계	
최대 평균 파워 밀도	10 MW/cm <sup>2</sup>
최대 에너지 밀도	10 J/cm <sup>2</sup>
최대 파워	1000 W
물리적 특성	
냉각	수냉식
구경 지름	32 mm
치수	145H x 250W x 132D mm
중량	5.5 kg
마운트 스테드	SM2
주문 정보	
BA32-1KW	205319

Specifications are subject to change without notice. Refer to the user manual for complete specifications.

이 제품에 관심이 있으십니까?

견적받기

[gentec-eo.com/ko/contact-us](http://gentec-eo.com/ko/contact-us)에서 현지 영업 담당자를 찾으십시오.