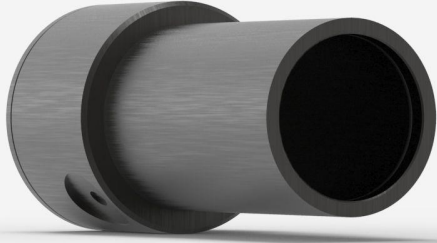


UM9B-BL-L-D0

Pyroelectric detector for laser power measurement up to 200 μ W.



PRODUCT FAMILY KEY FEATURES

VERY LOW NOISE LEVEL

Noise levels of a photo detector, but with the large bandwidth of a pyroelectric: down to 5 nW when using the analog power module (APM).

VERY HIGH RESPONSIVITY

Up to 20 000 V/W when using the analog power module (APM)

VERY LARGE BANDWIDTH

From DUV to FIR thanks to pyroelectric technology

SMART INTERFACE

Containing all the calibration data

COMPATIBLE STAND

[STAND-D-233](#)

SPECIFICATIONS

MEASUREMENT CAPABILITIES

Maximum average power (continuous)	200 μ W
Noise equivalent power	5 nW
Spectral range ¹	0.1 - 20 μ m
Typical rise time	0.2 s
Typical power sensitivity	20000 mV/W
Power calibration uncertainty ²	± 4 %
Chopper frequency ³	5 \pm 1 Hz

1. For the calibrated spectral range, see the user manual.

2. At 633 nm.

3. SDC-500 digital optical chopper sold separately

DAMAGE THRESHOLDS

Maximum average power density	50 mW/cm ²
-------------------------------	-----------------------

PHYSICAL CHARACTERISTICS

Aperture diameter	9 mm
Absorber	BL
Dimensions	38.1 \varnothing X 79D mm
Weight	0.09 kg

ORDERING INFORMATION

UM9B-BL-L-D0	202241
--------------	--------

Specifications are subject to change without notice. Refer to the user manual for complete specifications.

INTERESTED IN THIS PRODUCT?

GET A QUOTE

Find your local sales representative at gentec-eo.com/contact-us