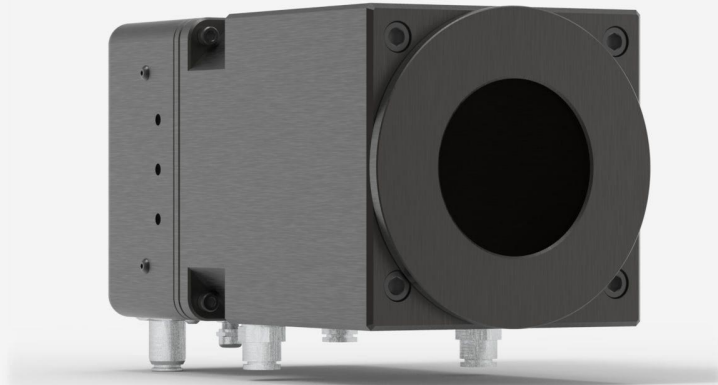


## HP-TUBE

Water-cooled TUBE for HP100A-4KW-HE and HP100A-12KW-HD.  
The HP detector needs to be sent back to be retrofitted and recalibrated (Calibration is included). It is NOT POSSIBLE to install the TUBE in the field.



### KEY FEATURES

#### WATER-COOLED TUBE FOR HP100A-4KW-HE AND HP100A-12KW-HD

- Reduces aperture diameter to 70 mm
- The HP detector needs to be sent back at Gentec-EO in Canada to be retrofitted and recalibrated

---



## SPECIFICATIONS

### PHYSICAL CHARACTERISTICS

Weight

0.04 kg

### ORDERING INFORMATION

HP-TUBE

**INTERESTED IN THIS PRODUCT?**

[GET A QUOTE](#)

Find your local sales representative at [gentec-eo.com/contact-us](https://gentec-eo.com/contact-us)