

## FOA-FULL-SMA

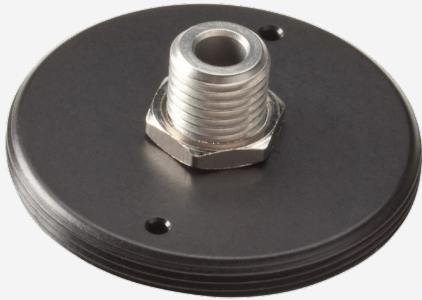
Faseroptischer SMA-Adapter mit Vollgehäuse.

### WESENTLICHE MERKMALE

---

#### SM1-THREADED FIBER ADAPTOR

Plug your fiber optic connectors directly to your detector. Includes an SMA fiber connector.



## SPEZIFIKATIONEN

### PHYSIKALISCHE EIGENSCHAFTEN

---

Gewicht

0,023 kg

### ORDERING INFORMATION

---

FOA-FULL-SMA

202368

## INTERESTED IN THIS PRODUCT?

[EIN ANGEBOT ANFORDERN](#)

Find your local sales representative at [gentec-eo.com/contact-us](https://gentec-eo.com/contact-us)