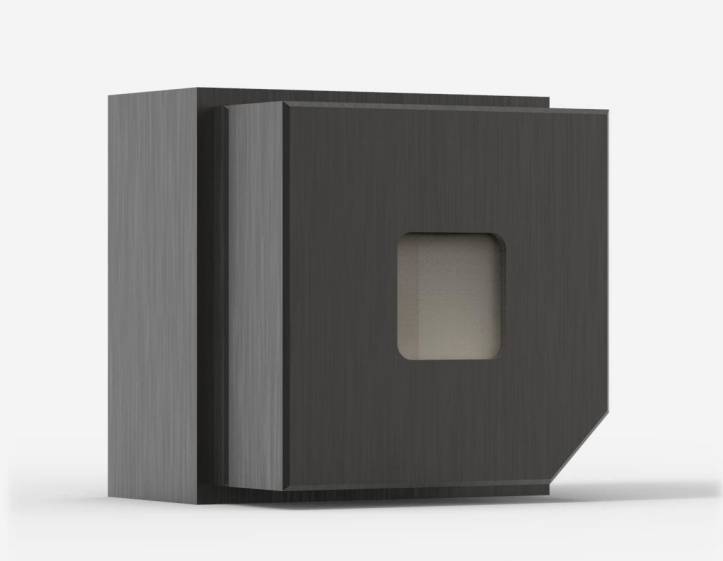


QE12HR-H-MT-D0

Pyroelectric detector for laser energy measurement up to 0.70 J.



KEY FEATURES

MODULAR CONCEPT

Increase the power capability of your detector: 2 different cooling modules

LOW NOISE LEVEL

0.7 μ J for the MB coating

QED ATTENUATOR AVAILABLE

Measure up to 5X higher energies. Available with optional calibration, all wavelengths between 532 & 1064 nm, or single wavelength. [Read more.](#)

HIGH REPETITION RATE OPTIONS

- QE12HR-MB: 1 000 Hz
- QE12HR-MT: 10 000 Hz

TEST TARGET INCLUDED

With the MB models

SMART INTERFACE

Containing all the calibration data

COMPATIBLE STAND

[STAND-D-233](#)

SPECIFICATIONS

MEASUREMENT CAPABILITIES

Spectral range ¹	0.193 - 20 μ m
Typical rise time	7 μ s
Repeatability	<0.5%
Maximum repetition frequency ²	10000 Hz
Typical energy sensitivity	100 V/J
Maximum measurable energy ³	0.7 J
Noise equivalent energy ⁴	1 μ J
Maximum pulse width	4 μ s
Energy calibration uncertainty	\pm 3 %

1. For the calibrated spectral range, see the user manual.
2. May be limited by the display or PC interface. Please refer to the corresponding user manual.
3. At 1064 nm, 7 ns, 10 Hz. Increasing pulse width increases maximum measurable energy.
4. Nominal value. Actual value depends on electrical noise in the measurement system.

DAMAGE THRESHOLDS

Maximum average power density ¹	10 W/cm ²
Maximum energy density ²	0.5 J/cm ²
Maximum power	5 W

1. At 1064 nm, 7 ns, 10 Hz.
2. At 1064 nm, 7 ns, 10 Hz.

PHYSICAL CHARACTERISTICS

Aperture width	12 mm
Aperture height	12 mm
Absorber	MT
Dimensions	36H x 36W x 33D mm
Weight	0.12 kg

INTERESTED IN THIS PRODUCT?

GET A QUOTE

Find your local sales representative at gentec-eo.com/contact-us