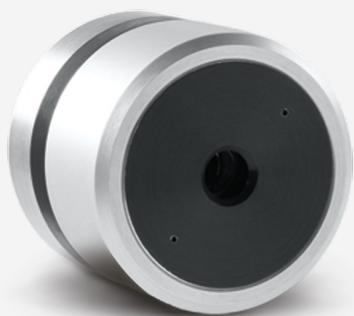


QUAD-9-MT-P

4-quadrant laser position sensing detector for CW lasers (using a chopper).



PRODUCT FAMILY KEY FEATURES

Measure, Track and Align

Follow your laser beam wherever it goes.

4-Channel Detectors

Unique quadrant detector technology senses laser beam position with high resolution.

For CW, Pulsed and High Rep Rate Lasers

- QUAD-E: energy per pulse from μJ to mJ
- QUAD-P: powers from μW to mW

From UV to FIR and THz

Absorbers to cover all sources, from UV to millimeter wavelengths

Large Area Sensors

9 mm and 20 mm square detectors

Fast USB 2.0 Connection

Ensures full speed tracking

Includes Application Software

Complete LabView application software included, with many features

COMPATIBLE STAND

[STAND-D-233](#)

SPECIFICATIONS

MEASUREMENT CAPABILITIES

Noise equivalent power	1 μW
Spectral range	0.1 - 3000 μm
Typical rise time	0.02 sec
Typical power sensitivity	2000 V/W
Minimum beam size ¹	4.5 mm \varnothing
Minimum position resolution	10 μm
Maximum chopping frequency	50 Hz

1. For optimal performance

DAMAGE THRESHOLDS

Maximum average power density ¹	0.1 W/cm ²
Maximum energy density ²	50 mJ/cm ²

1. At 1064 nm.

2. At 1064 nm, 10 ns.

PHYSICAL CHARACTERISTICS

Aperture width	9 mm
Aperture height	9 mm
Absorber	MT
Dimensions	63.5 \varnothing X 40.6D mm
Weight	0.18 kg

ORDERING INFORMATION

INTERESTED IN THIS PRODUCT?

GET A QUOTE

Find your local sales representative at gentec-eo.com/contact-us