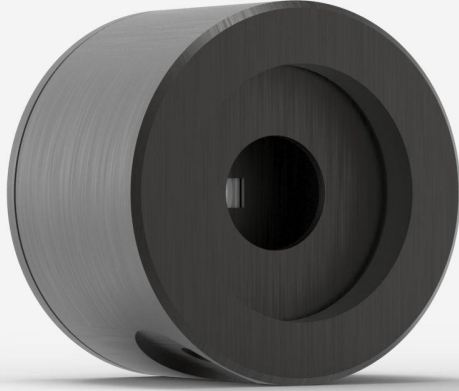


## PE3B-IN-D0

Photodiode detector for laser energy measurement up to 245 pJ.



### PRODUCT FAMILY KEY FEATURES

#### VERY LOW NOISE LEVEL

Take measurements with a noise level as low as 8 fJ (model PE3B-Si only) with the M-LINK, MAESTRO and S-LINK monitors.

#### 3 SENSORS AVAILABLE

- PE-B-SI family: 3 and 10 mm  $\varnothing$  silicon sensors for 0.21 to 1.08  $\mu\text{m}$
- PE5B-GE: 5 mm  $\varnothing$ , germanium sensor for 0.8 to 1.65  $\mu\text{m}$
- PE3B-IN: 3 mm  $\varnothing$ , InGaAs sensor for 0.9 to 1.7  $\mu\text{m}$

#### SMART INTERFACE

Containing all the calibration data

#### COMPATIBLE STAND

[STAND-D-233](#)

## SPECIFICATIONS

### MEASUREMENT CAPABILITIES

Spectral range <sup>1</sup>	900 - 1700 nm
Typical rise time	12 $\mu\text{s}$
Maximum repetition frequency	1000 Hz
Maximum measurable energy <sup>2</sup>	245 pJ
Noise equivalent energy <sup>3</sup>	30 fJ
Maximum pulse width	10 $\mu\text{s}$
Energy calibration uncertainty	$\pm 4\%$ (1310 nm)

1. This detector is NIST-traceable at the calibration wavelength of 1310 nm. Typical values are used at other wavelengths.

2. At 1310 nm. See curves for maximum power at other wavelengths.

3. Nominal value. Actual value depends on environmental electromagnetic interference and wavelength.

### DAMAGE THRESHOLDS

Maximum power	1.18 $\mu\text{W}$
---------------	--------------------

### PHYSICAL CHARACTERISTICS

Aperture diameter	3 mm
Absorber	InGaAs
Dimensions	38.1 $\varnothing$ x 27.4D mm&nbsp;nbsp;
Weight	0.09 kg

### ORDERING INFORMATION

PE3B-In-D0
PE3B-In-INT-D0
PE3B-In-INE-D0
PE3B-In-IDR-D0

Specifications are subject to change without notice. Refer to the user manual for complete specifications.

**INTERESTED IN THIS PRODUCT?**

GET A QUOTE

Find your local sales representative at [gentec-eo.com/contact-us](https://gentec-eo.com/contact-us)